



**Challenge Accepted**  
**Incorporating Patient Safety & Quality**  
**Improvement into Podiatric Residency Training**

**Christine Miller, DPM, PhD**  
**University of Florida-College of Medicine**  
**Jacksonville**

# Just Culture of Safety

## Just Culture

- Train & rewards reporting
- Shared responsibility
- Teamwork focused
- Encourage better communication

## Pathologic

- Hide errors
- “Shoot” the messenger
- Lack accountability
- Discourage new ideas

# Following a CLER Pathway

- **CLER (Clinical Learning Environment Review) implemented by the ACGME**
- **6 focus area: patient safety, care quality, care transitions, supervision, fatigue management and professionalism**
- **CLER site visit every 24 months**



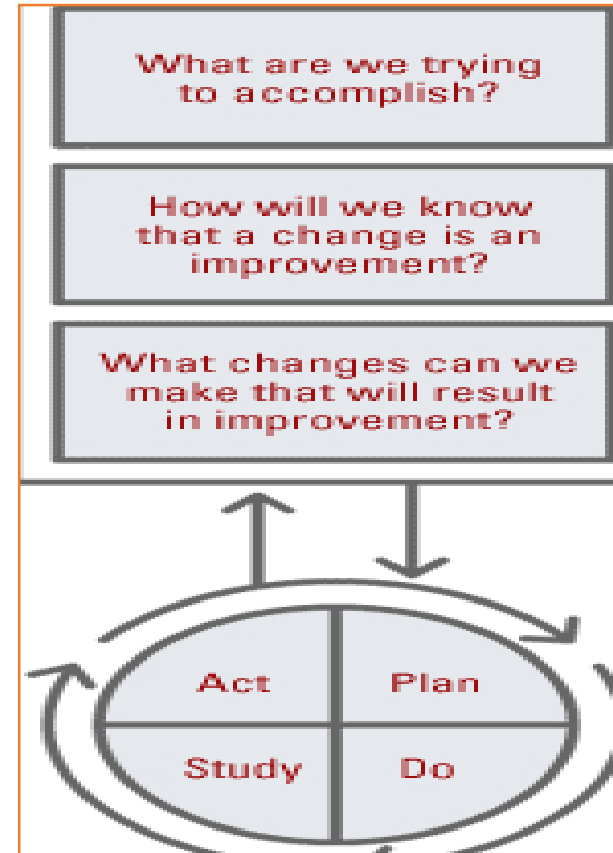
# What does this have to do with me?

- **Everyone is a stakeholder (We need our own voice).**
- **Attention to safety & quality is necessary for future practice**
- **Demonstrating how a safety lapse can have a lasting impact.**



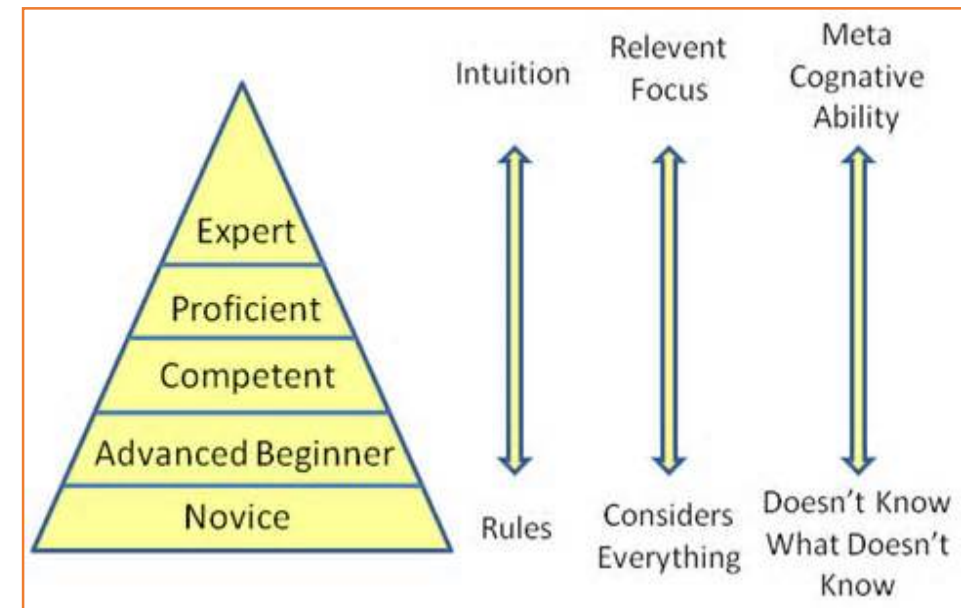
# Safety & Quality Projects

- **Select practical issues & analyze with a RCA (Root Cause Analysis)**
- **Use a team approach**
- **Less is more**
- **Opportunity to make an impact**

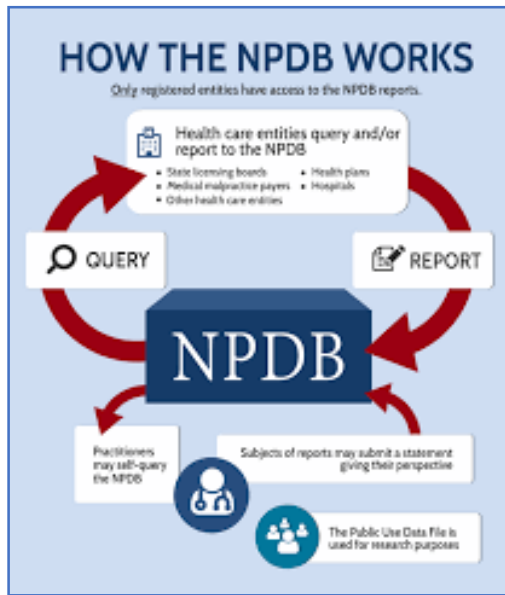


# Faculty Mentorship

- Resident leadership with faculty support is needed for project success
- Attending mentorship is key for “buy-in”
- Assign roles based on skill level of resident







# Legal Aspects of Safety

- Lapses that can result in medical malpractice suits
- Provide strategies for reducing risk
- How to handle patient complaints in a timely professional manner
- Explain the National Practitioner Data Bank (NPDB)



## 2<sup>nd</sup> Victim Awareness

- **Important to establish a supportive network when residents are involved in an adverse event**
- **Access to professional counseling is very important to help through this difficult time.**



# THANK YOU



# References

- Kohn, LT, JM Corrigan, and Ms Donaldson, eds. *To Err Is Human: Building a Safer Health System*. Washington, DC: National Academy Press (2000).
- Voss, John D., Natalie B. May, John B. Schorling, Jason A. Lyman, Joel M. Schectman, Andrew M.d. Wolf, Mohan M. Nadkarni, and Margaret Plews-Ogan. "Changing Conversations: Teaching Safety and Quality in Residency Training." *Academic Medicine* 83.11 (2008): 1080-087.
- Griffin FA, Resar RK. *IHI Global Trigger Tool for Measuring Adverse Events (Second Edition)*. IHI Innovation Series white paper. Cambridge, Massachusetts: Institute for Healthcare Improvement; 2009
- Macleod, Les, EdD, MPH, FACHE. "Second Victim" Causalities and How Physician Leaders Can Help." *PEJ* (2014): 8-12