



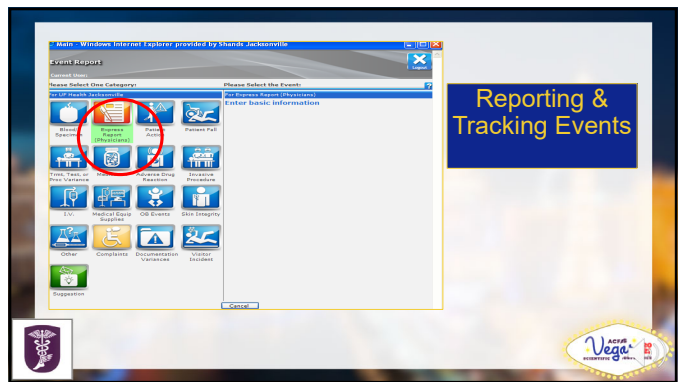
1



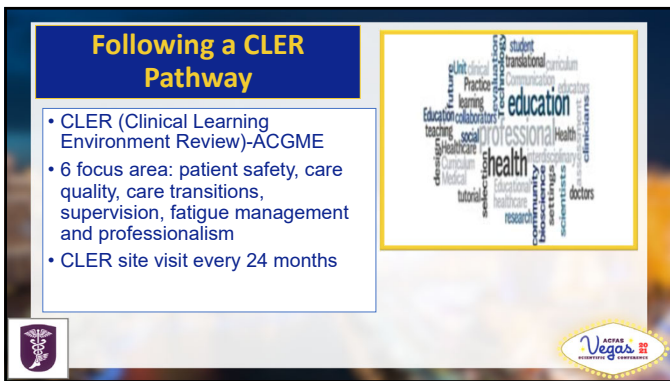
2



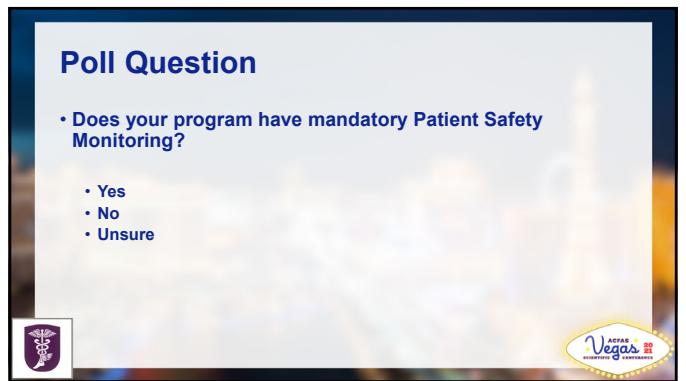
3



4



5



6

## Relevant Education

7

## Safety & Quality Projects

**The 5 Whys**

Define the Problem

Why is it happening?

Why is that?

Why is that?

Why is that?

Why is that?

Why is that? Root Cause

8

## QI Projects-Addressing Real Issues

**Multimodal pain medications**

**Please note:**  
acetaminophen (TYLENOL) - do not use with known hepatic disease, alcoholism (CALIBREX) - avoid if QFR < 60. May give in the presence of sulfis allergy gabapentin (NEURONTIN) - use 300mg if QFR below 60

- acetaminophen (TYLENOL) tablet 1,000 mg  
1,000 mg Oral, Q6H, today at 1200. For 1 dose  
Pre-Op holding. Sign & Hold.
- celecoxib (CALIBREX) capsule 400 mg  
400 mg Oral, Q6H, today at 1530. For 1 dose  
Pre-Op holding. Sign & Hold.
- gabapentin (NEURONTIN) capsule 600 mg  
600 mg Oral, Q6H, today at 1530. For 1 dose  
Pre-Op holding. Sign & Hold.

**Total knee replacement**

9

## Poll Question

• Does your program or institution have a support system in place regarding "2<sup>nd</sup> Victim Awareness"?

- Yes
- No
- Unsure

10

## Legal Aspects of Safety & QI

"Patients on one side, lawyers on the other."

- Common lapses that can result in medical malpractice suits
- Provide strategies for reducing risk
- Focus on communication and documentation
- Explain the National Practitioner Data Bank (NPDB)

11

## 2<sup>nd</sup> Victim Awareness

**Second Victim Syndrome:** "Those who suffer emotionally when the care they provide leads to patient harm."

**"You are Not Alone"**




Recognizing and Responding to the Second Victim

**HEALTHY MIND, BODY & SPIRIT**

12

## Key Points



- Communication & teamwork are key!
- Reporting adverse events and near misses
- Faculty involvement is pivotal

13

## References



- "Clinical Learning Environment Review (CLER)." *ACGME*, [www.acgme.org/What-We-Do/Initiatives/Clinical-Learning-Environment-Review-CLER](http://www.acgme.org/What-We-Do/Initiatives/Clinical-Learning-Environment-Review-CLER).
- Wecksell, Matthew. "Reflections on the ACGME CLER Survey." *Journal of Graduate Medical Education*, vol. 8, no. 3, 2016, pp. 470–470., doi:10.4300/jgme-d-16-00030.1.
- Bowe, Sarah N., and Michael E. McCormick. "Resident and Fellow Engagement in Safety and Quality." *Otolaryngologic Clinics of North America*, vol. 52, no. 1, 2019, pp. 55–62., doi:10.1016/j.otc.2018.08.010.
- Macleod, Les. "Second Victim-Causalities and How Physician Leaders Can Help". *PEJ* (2014): pp.8-12.

14

# Thank-you!!

Questions????

15